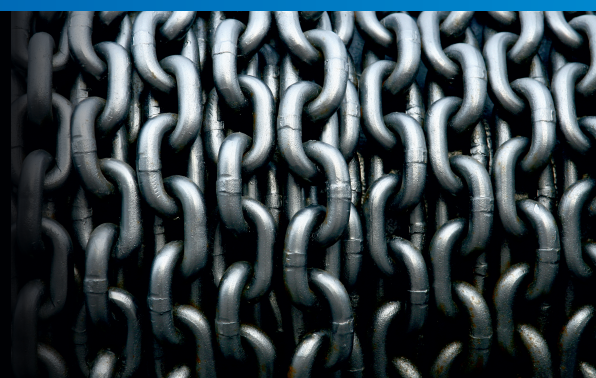


Supplier of high quality industrial  
**round link chains**

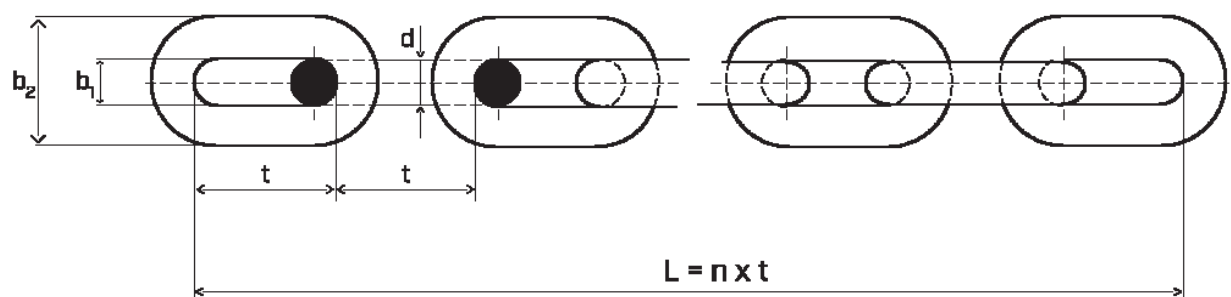


# Chains for agriculture

## Chains for manure spreaders, manure scrapers and loading wagons

High tensile chains, calibrated and tested, made in class 50, 60 and 80.

The chains are manufactured in accordance with specific DIN, PN and EN standards.



### DIMENSIONS

Nominal size	Diameter		Pitch		Internal width	External width	Weight	
$d \times t$	$d$		$t$		$b_1$ min.	$b_2$ max.		
mm							kg/m	
8 x 24	8	±0,3	24	+0,6	-0,6	9,2	26,8	1,4
8 x 25,4	8	±0,5	25,4	+0,1	-0,1	9,4	26,6	1,35
8 x 31	8	±0,3	31	+0,6	-0,6	11,2	28,8	1,3
9 x 27	9	±0,4	27	+0,6	-0,6	11,1	30,9	1,8
9 x 31	9	±0,4	31	+0,6	-0,6	11,1	30,9	1,62
10 x 28	10	±0,4	28	+0,6	-0,6	12	34	2,2
10 x 31	10	±0,4	31	+0,6	-0,6	13	35	2,1
10 x 35	10	±0,4	35	+0,6	-0,3	13	35	2,05
11 x 31	11	±0,4	31	+1	-1	12,9	37,1	2,7
12 x 36	12	±0,5	36	+1	-1	14	40,8	3,3
12 x 42	12	±0,5	42	+1	-1	15,6	42	2,9
13 x 36	13	±0,5	36	+1	-1	15,6	44,2	3,8
13 x 45	13	±0,5	45	+1	-1	16,9	45,4	3,45
14 x 42	14	±0,6	42	+0,8	-0,8	16,8	47,6	4,25
14 x 50	14	±0,6	50	+1	-0,5	17	48	4
14 x 80	14	±0,6	80	+1	-1	23	55	3,6
16 x 48	16	±0,6	48	+1	-1	19,5	56	5,7
16 x 56	16	±0,6	56	+1	-1	21,6	56	5,2
16 x 80	16	±0,6	80	+1	-1	22,4	58	4,7



## MECHANICAL PROPERTIES

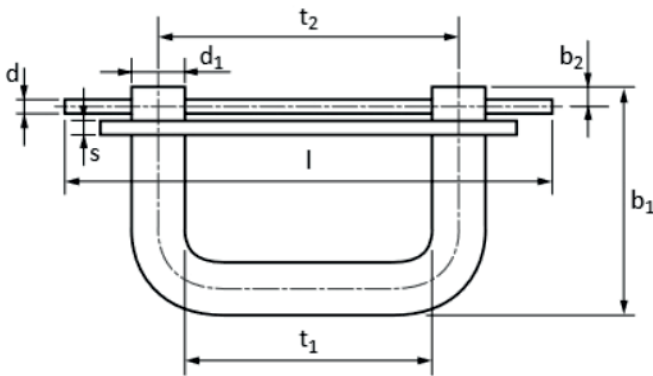
Nominal size	Chain grade			Standard
	50	60	80	
d x t	Minimum breaking load			Standard
mm	kN			
8 x 24	50	63	80	DIN 5684
8 x 25,4	50	63	80	-
8 x 31	50	63	80	DIN 32 895
9 x 27	63	80	100	DIN 5684
9 x 31	63	80	100	DIN 32 895
10 x 28	80	100	125	DIN 5684
10 x 31	80	100	125	DIN 32 895
10 x 35	80	100	125	DIN 764
11 x 31	100	125	150	DIN 5684
12 x 36	120	160	180	DIN 32 895
12 x 42	121	160	180	-
13 x 36	132	170	212	DIN 5684
13 x 45	132	171	212	DIN 32 895
14 x 42	160	215	250	EN 818-7
14 x 50	190	215	250	DIN 22252
14 x 80	160	217	252	-
16 x 48	200	250	320	EN 818-7
16 x 56	200	250	320	DIN 764
16 x 80	200	250	320	DIN 20 637



# Accessories for agriculture

## Connecting chain links

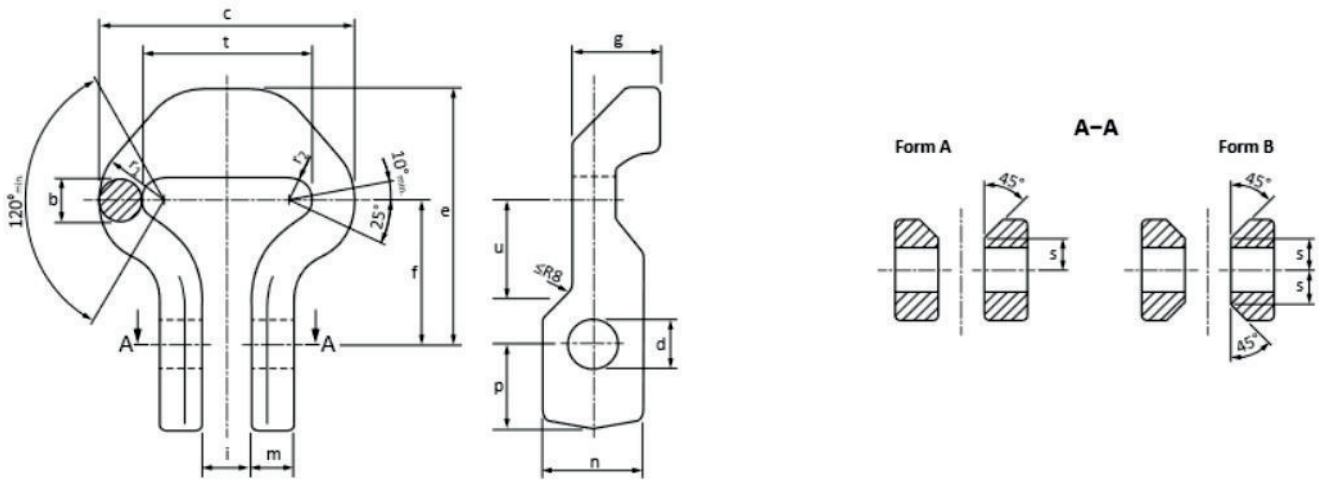
High tensile and hardness connecting links.



## DIMENSIONS AND MECHANICAL PROPERTIES

Link size	$d_1$	$t_1$	$t_2$	$b_1$	$l$	$d$	$b_2$	$s$	Load limit max.	Breaking force min.
	mm									
8 x 31	$8 \pm 0,3$	31 - 0,4	39	28,5	39	3	5	4	18	71
9 x 31	$9 \pm 0,4$	31 - 0,5	40	32	40	3	5	5	22,4	90
10 x 31	$10 \pm 0,4$	31 - 0,5	41	35	41	4	5	5	28	112
11 x 31	$11 \pm 0,4$	31 - 0,5	42	38	42	4	6	6	38	160
12 x 36	$12 \pm 0,5$	36 - 0,6	43	39	45	5	6	6	41	170
13 x 36	$13 \pm 0,5$	36 - 0,6	47	41	47	5	7	7	47,5	190

## Shackle acc. to DIN 22253, PN-G-46696



### DIMENSIONS AND MECHANICAL PROPERTIES

Shackle size	b	t	c	d	e	i	m	n	p	f	g	Breaking force min. kN	Weight kg/pcs.
	mm												
14 x 50	15	50	78	17	78	19	15	32	17	51	29	225	0,7

### MECHANICAL PROPERTIES OF BOLT AND NUT

Shackle size	Thread symbol	Mechanical property		Nut tightening torque [Nm]
		bolt acc. to PN-82/M-82054/03	bolt acc. to PN-82/M-82054/09	
14 x 50	M16	8,8	8	180

## Sprockets for selected manure spreaders

We offer a wide range of sprockets that are a component of conveyor belt in agricultural machines.

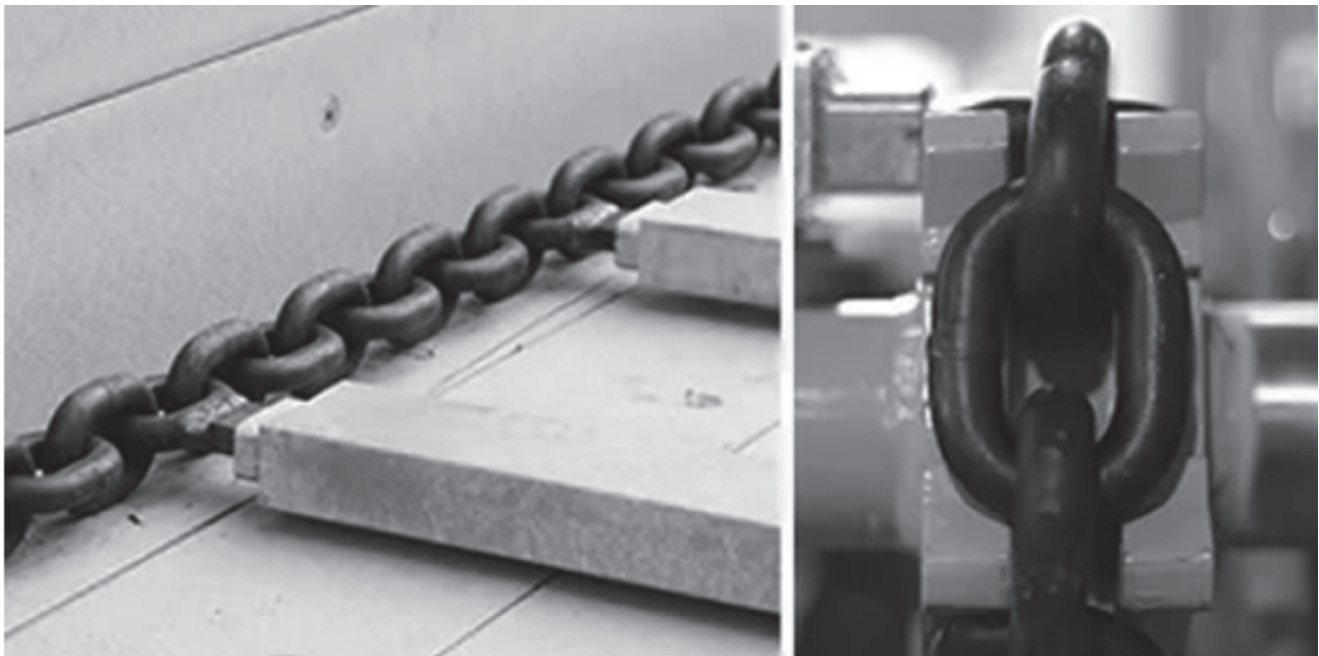




# Conveyor belt

## Conveyor belt (floor carpet)

Our assortment also includes chain routes for manure spreaders. Made to individual order. Details should be agreed with the sales department each time.











Supplier of high quality industrial  
**round link chains**



**Glob Chain Sp. z o.o.**

Post code: 44-190  
City: Knurów, Poland  
Street: Przemysłowa 18  
VAT: PL 9691636520

Contact:  
+48 451 172 094  
[biuro@globchain.com.pl](mailto:biuro@globchain.com.pl)  
[www.globchain.com.pl](http://www.globchain.com.pl)