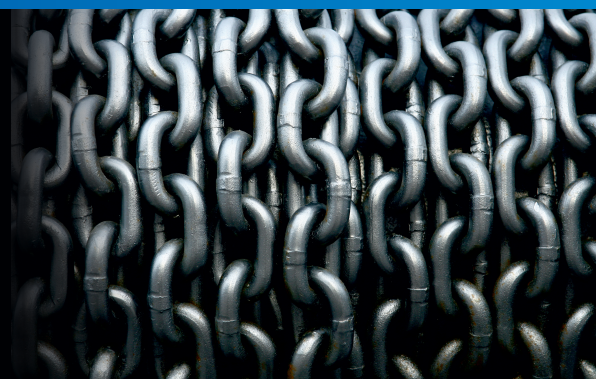


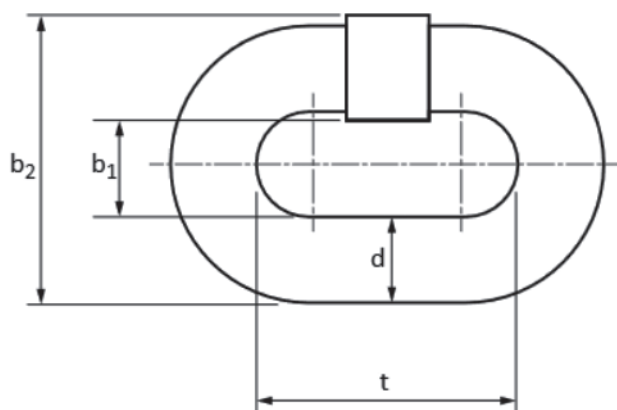
Supplier of high quality industrial
round link chains



Chains for mining

Round link mining chains acc. to DIN 22252, PN-G-46701

Mining chains used for scraper conveyors, coal ploughs used in underground mining facilities and other industrial conveyors.



DIMENSIONS

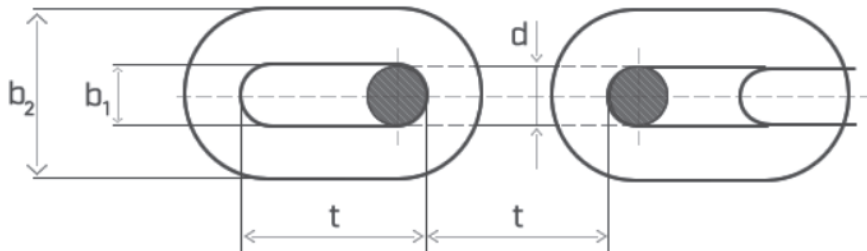
Nominal size	Diameter	Pitch	Internal width	External width	Weight
d x t	d	t	b ₁ min.	b ₂ max.	
mm					kg/m
14 x 50	14 ± 0,4	50±0,5	17	48	4
18 x 64	18 ± 0,5	64±0,6	21	60	6,6
19 x 64,5	19 ± 0,5	64,5±0,6	22	63	7,6
22 x 86	22 ± 0,7	86±0,9	26	73	9,5
24 x 86	24 ± 0,8	86±0,9	28	79	11,6
24 x 87,5	24 ± 0,8	87,5±0,9	28	79	11,5
26 x 92	26 ± 0,8	92±0,9	30	86	13,7
30 x 108	30 ± 0,9	108±1,1	34	98	18
34 x 126	34 ± 1,0	126±1,3	38	110	22,7

MECHANICAL PROPERTIES

Nominal size d x t	Grade	Breaking load min.	Elongation at		Deflection of link f	Fatigue resistance min.
mm		[kN]	test force max. %	breaking force min. %	[mm]	[cycles]
14 x 50	B	190	1,4	14	14	50 000
	C	250	1,6	14		70 000
	D	310	1,9	14		90 000
18 x 64	B	320	1,4	14	18	50 000
	C	410	1,6	14		70 000
	D	510	1,9	14		90 000
19 x 64,5	C	450	1,6	14	19	70 000
	D	565	1,9	14		90 000
22 x 86	C	610	1,6	14	22	70 000
	D	760	1,9	14		90 000
24 X 86	C	720	1,6	14	24	70 000
	D	900	1,9	14		90 000
26 x 92	C	850	1,6	14	26	70 000
	C+	960	1,4	17		90 000
	D	1060	1,9	14		90 000
30 x 108	C	1130	1,6	14	30	70 000
	C+	1270	1,4	17		90 000
	D	1400	1,9	14		90 000
34 x 126	C	1450	1,6	14	34	70 000
	C+	1650	1,4	17		90 000
	D	1800	1,9	14		90 000

Chains for suspension and transportation acc. to DIN 20637

Calibrated and tested chains used as a suspension elements for rails of transport facilities and other equipment. Chain with 20% elongation at break as minimum.



DIMENSIONS

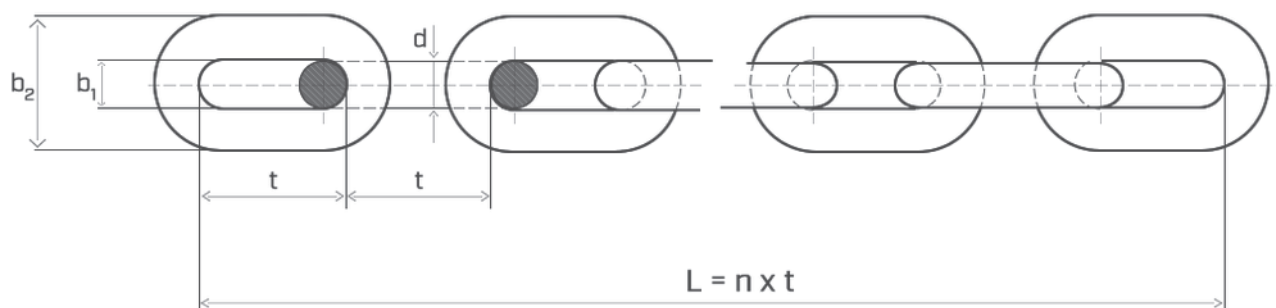
Nominal size	Diameter	Pitch	Internal width	External width	Weight
d x t	d	t	b ₁ min.	b ₂ max.	
mm					kg/m
16 x 80	16 ± 0,6	80 ± 1,5	22,4 + 3	57,4	4,7
18 x 90	18 ± 0,9	90 ± 1,5	25 + 3	64	6

MECHANICAL PROPERTIES

Nominal size	Manufacturing proof load		Preload	Proof load	Breaking force min.	Elongation at		Deflection of link f
	min.	max.				proof load max.	breaking force min.	
mm	kN			%		mm		
16 x 80	60	100	6	60	180	1,6	20	21
18 x 90	100	140	10	100	250	1,6	20	23

Hoist chains acc. to DIN 5684, PN-G-46732

Calibrated and tested chains used for hoisting winches, manually and mechanical operated lifting and transportation equipment.



DIMENSIONS

Nominal size	Diameter		Pitch			Internal width		External width		Lenght L= 11 x t		Weight
	d x t	d	t			b ₁ min.	b ₂ max.				kg/m	
mm												
4 x 12	4	±0,2	12	+0,15	-0,1	5	13,7	132	+0,4	-0,2	0,35	
5 x 15	5	±0,2	15	+0,2	-0,1	6	16,9	165	+0,5	-0,3	0,54	
5 x 18,5	5	±0,2	18.5	+0,25	-0,1	6	16,9	203.5	+0,7	-0,3	0,5	
6 x 18	6	±0,2	18	+0,25	-0,1	7,2	20,2	198	+0,6	-0,3	0,8	
6 x 18,5	6	±0,2	18.5	+0,25	-0,1	7.2	20.2	203.5	+0,7	-0,3	0,8	
7 x 21	7	±0,3	21	+0,3	-0,1	8,4	23,6	231	+0,7	-0,4	1,1	
7 x 22	7	±0,3	22	+0,3	-0,15	8.4	23.6	242	+0,8	-0,4	1,1	
8 x 24	8	±0,3	24	+0,3	-0,15	9.6	27	264	+0,8	-0,4	1,4	
9 x 27	9	±0,4	27	+0,35	-0,2	10.8	30.4	297	+1	-0,5	1,8	
10 x 28	10	±0,4	28	+0,35	-0,2	12	34	308	+1	-0,5	2,2	
11 x 31	11	±0,4	31	+0,4	-0,2	13.2	37,4	341	+1,1	-0,5	2,7	
13 x 36	13	±0,5	36	+0,45	-0,25	15.6	47,2	396	+1,3	-0,6	3,8	
14 x 41	14	±0,6	41	+0,5	-0,3	16.8	47,6	451	+1,4	-0,7	4,4	
16 x 45	16	±0,6	45	+0,6	-0,3	19.2	54,4	495	+1,6	-0,8	5,7	
18 x 50	18	±0,9	50	+0,65	-0,3	21.6	61,2	550	+1,8	-0,9	7,3	

MECHANICAL PROPERTIES

Nominal size d x t	Grade 50				
	with power drive	with manual drive	Proof load	Breaking load min.	Deflection of link f
mm	kg	kg	kN		min
4 x 12	250	320	6,3	12,5	3
5 x 15	400	500	10	20	4
5 x 18,5	400	500	10	20	4
6 x 18	600	750	15	30	5
6 x 18,5	600	750	15	30	5
7 x 21	800	1 000	20	40	6
7 x 22	800	1 000	20	40	6
8 x 24	1 000	1 250	25	50	7
9 x 27	1 250	1 600	32	63	7
10 x 28	1 600	2 000	40	80	8
11 x 31	2 000	2 500	50	100	9
13 x 36	2 650	3 350	67	132	11
14 x 41	3 200	4 000	80	160	12
16 x 45	4 000	5 000	100	200	13
18 x 50	5 000	6 300	125	250	15

MECHANICAL PROPERTIES

Nominal size d x t	Grade 60				
	with power drive	with manual drive	Proof load	Breaking load min.	Deflection of link f
mm	kg	kg	kN		min
4 x 12	320	400	8	16	3
5 x 15	500	630	12,5	25	4
5 x 18,5	500	630	12,5	25	4
6 x 18	750	900	18	37,5	5
6 x 18,5	750	900	18	37,5	5
7 x 21	1 000	1 250	25	50	6
7 x 22	1 000	1 250	25	50	6
8 x 24	1 250	1 600	32	63	7
9 x 27	1 600	2 000	40	80	7
10 x 28	2 000	2 500	50	100	8
11 x 31	2 500	3 000	60	125	9
13 x 36	3 200	4 250	85	170	11
14 x 41	4 000	5 000	100	200	12
16 x 45	5 000	6 300	125	250	13
18 x 50	6 300	8 000	160	320	15

MECHANICAL PROPERTIES

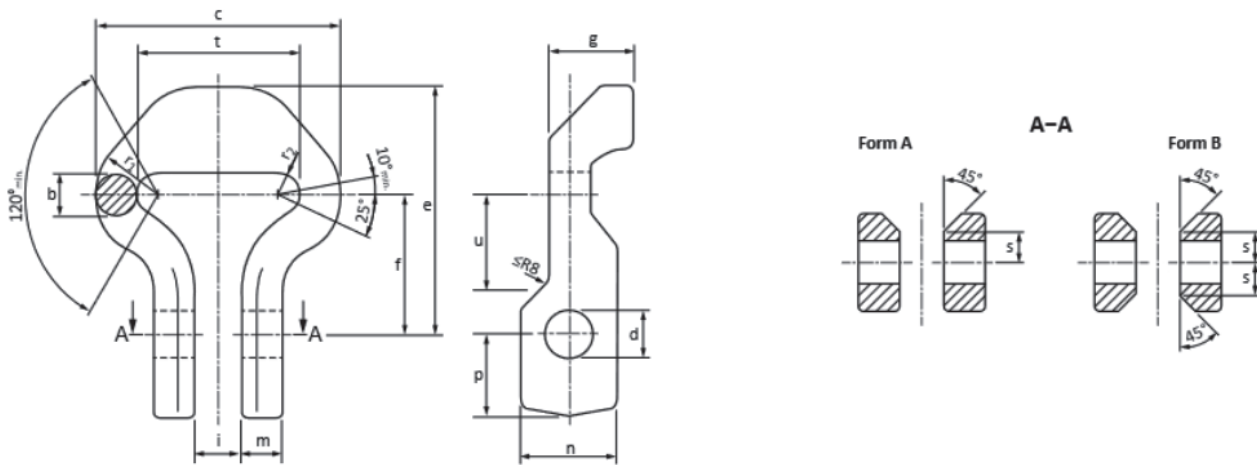
Nominal size d x t	Grade 80				
	with power drive	with manual drive	Proof load	Breaking load min.	Deflection of link f
mm	kg	kg	kN		min
4 x 12	400	500	10	20	3
5 x 15	650	750	15	32	4
5 x 18,5	650	750	15	32	4
6 x 18	900	1120	22,4	45	5
6 x 18,5	900	1120	22,4	45	5
7 x 21	1 250	1 500	30	60	6
7 x 22	1 250	1 500	30	60	6
8 x 24	1 600	2 000	40	80	7
9 x 27	2 000	2 500	50	100	7
10 x 28	2 500	3 200	63	125	8
11 x 31	3 000	3 750	75	150	9
13 x 36	4 250	5 300	106	212	11
14 x 41	5 000	6 000	120	250	12
16 x 45	6 300	8 000	160	320	13
18 x 50	8 000	10 000	200	400	15



Accessories for mining

Shackles for mining chains acc. to DIN 22253, PN-G-46696

Shackles used for scraper conveyors in underground mining facilities and other industrial conveyors.



DIMENSIONS

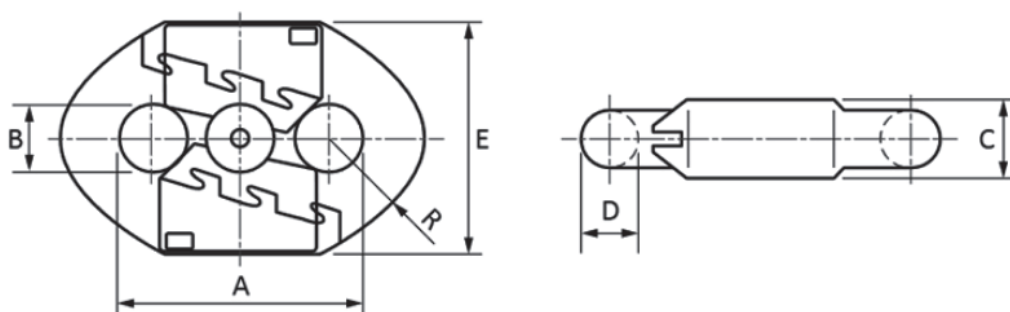
Shackle size	b	t	c	d	e	i	m	n	p
mm									
14 x 50	15	50	78	17	78	19	15	32	17
18 x 64	18	64	100	21	100	22	18	43	37

MECHANICAL PROPERTIES

Shackle size	Test force	Breaking load min.	Elongation at breaking load min.	Fastening elements		Nut tightening torque	Weight
				Bolt	Nut		
mm		kN	%			Nm	kg/pcs
14 x 50	180	225	8	M16x70-8.8-8	M16-8-8	180	0,7
18 x 64	300	370		M20x70-10.9-8	M20-10-8	400	1,1

Connecting links acc. to DIN 22258, PN-G-46705

Connecting links used to connect mining chain segments in scraper conveyors, coal ploughs used in underground mining facilities.



DIMENSIONS AND MECHANICAL PROPERTIES

Connecting links size	D	A	B	E	C	R	Test force	Breaking force min.	Weight
	max.					angle >130			
	mm								
26 x 92	26 ± 0,8	92 ± 0,9	28	97	33	40	640	770	1,9
30 x 108	30 ± 0,9	108 ± 1,1	32	109	36	46	850	1020	2,9
34 x 126	34 ± 1,0	126 ± 1,3	36	121	41	52	1080	1310	4,2







Supplier of high quality industrial
round link chains



Glob Chain Sp. z o.o.

Post code: 44-190
City: Knurów, Poland
Street: Przemysłowa 18
VAT: PL 9691636520

Contact:
+48 451 172 094
biuro@globchain.com.pl
www.globchain.com.pl