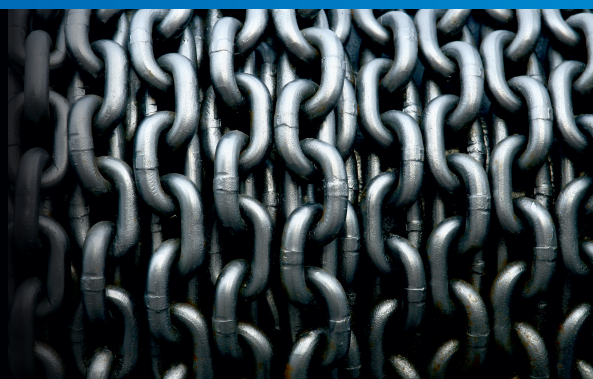


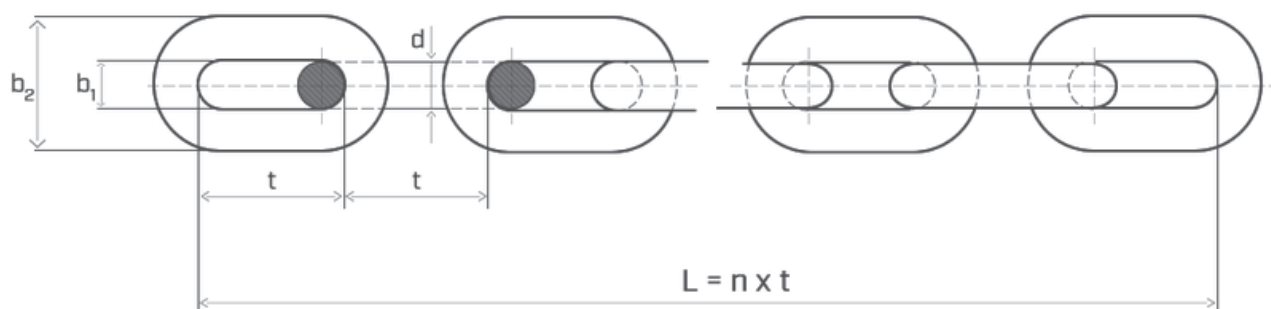
Supplier of high quality industrial  
**round link chains**



# Chains for power industry

## Chains for conveyors acc. to DIN 764

Chains calibrated, tested, specially hardened: above 425 HV, carburized [640 HV - 840 HV] or nitrided [900 HV - 1000 HV]



### DIMENSIONS

Nominal size	Diameter	Pitch		Internal width		External width		Length $L = 11 \times t$				Weight	
								d x t	d	t	$b_1$ min.		$b_2$ max.
mm													
10 x 35	10	±0,4	35	+0,6	-0,2	14	36	385	+2	-1	+3	-1	2,05
13 x 45	13	±0,5	45	+0,8	-0,3	18	47	495	+3	-1	+4	-1	3,5
16 x 56	16	±0,5	56	+1,0	-0,3	22	58	616	+3	-1	+5	-2	5,3
18 x 63	18	±0,9	63	+1,1	-0,4	24	65	693	+4	-1	+6	-2	6,7
20 x 70	20	±1,0	70	+1,3	-0,4	27	72	770	+4	-1	+6	-2	8,3
26 x 91	26	±1,3	91	+1,6	-0,5	35	94	1001	+5	-2	+8	-3	14,0

To ensure proper operation between chain and wheel, it is recommended to provide chain supplier with this wheel.

- 1) Execution A - suitable to work on socket wheels
- 2) Execution B - suitable to work on toothed chain wheels .

## MECHANICAL PROPERTIES BEFORE ADDITIONAL HEAT TREATMENT

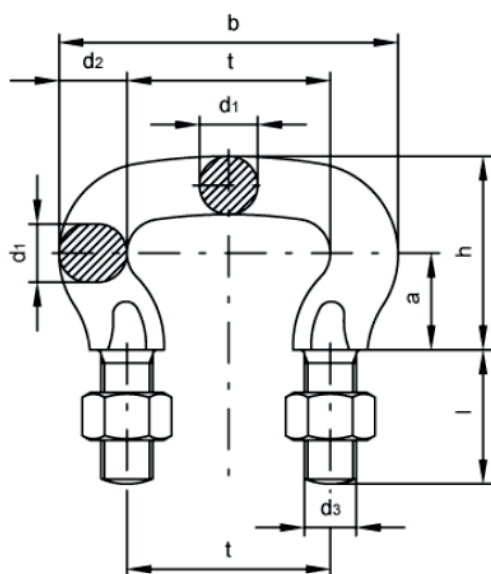
Nominal size	Working load limit max.	Manufacturing proof load	Breaking load min.	Deflection of link min.
d x t				
mm	kg	kN		mm
10 x 35	1250	36	50	10
13 x 45	2120	56	80	13
16 x 56	3150	90	125	16
18 x 63	4000	110	160	18
20 x 70	7250	140	200	20
26 x 91	8500	220	320	26



# Accessories for power industry

## Bucket links for conveyors acc. to DIN 745, DIN 5699

Bucket links used to connect chain segments with buckets.



### DIMENSIONS AND MECHANICAL PROPERTIES

Bucket size	t	a	b	d <sub>1</sub>	d <sub>2</sub>	d <sub>3</sub>	h	l	Weight	RC4		RC5	
										Proof load	Breaking load min.	Proof load	Breaking load min.
										mm			
T45	45	20	73	11,5	14	M10	40	25	0,17	26	59	28	63
T56	56	25	92	15	18	M12	50	32	0,36	45	99	46	107
T63	63	30	105	18	21	M16	60	40	0,6	64	143	67	153
T70	70	34	116	20	23	M20	68	45	0,9	79	176	82	189
T80	80	37	132	23	26	M20	74	45	1,13	104	233	109	250
T91	91	43	149	26	29	M24	86	55	1,83	133	298	139	319
T105	105	50	173	30	34	M24	100	55	2,4	177	396	184	425





Supplier of high quality industrial  
**round link chains**



**Glob Chain Sp. z o.o.**

Post code: 44-190  
City: Knurów, Poland  
Street: Przemysłowa 18  
VAT: PL 9691636520

Contact:  
+48 451 172 094  
[biuro@globchain.com.pl](mailto:biuro@globchain.com.pl)  
[www.globchain.com.pl](http://www.globchain.com.pl)